

NOTES:

- THE PROPERTIES DELINEATED ON THIS PLAN ARE SHOWN ON FAIRFAX COUNTY TAX MAP 017-3-08-0002A AND 017-3-08-A AND ARE ZONED I-4.
- BOUNDARY INFORMATION FROM A FIELD RUN BOUNDARY SURVEY BY WILLIAM H. GORDON ASSOCIATES, INC.
- NO TITLE REPORT FURNISHED.

AREA TABULATION:

REZONING AREA 1	604,741 SQ. FT. OR 13.88294 AC.
REZONING AREA 2	7,928 SQ. FT. OR 0.18200 AC.
REZONING AREA 3	406 SQ. FT. OR 0.00932 AC.
TOTAL PDC REZONING AREA	613,075 SQ. FT. OR 14.07426 AC.
MWAA FEE AREA	82,896 SQ. FT. OR 1.90303 AC.
TOTAL AREA BLOCK 2A	695,971 SQ. FT. OR 15.97729 AC.

LEGEND:

▨ = MWAA FEE AREA

P.O.B. = POINT OF BEGINNING

No.	Revision	Date
1	UPDATE REZONING PLAN	4/5/19
2	UPDATE REZONING PLAN	4/12/19

Gordon

PROGRAMMING AND PLANNING
CIVIL ENGINEERING
LANDSCAPE ARCHITECTURE
SURVEY AND MAPPING
SECURITY CONSULTING

4501 Daily Drive
Chantilly, VA 20151
Phone: 703-263-1900
www.gordonus.com

COMMONWEALTH OF VIRGINIA
STANLEY D. HEISER
Lic. No. 001709
LAND SURVEYOR

REZONING PLAN
OF
OUTLOT A, BLOCK 2A, SECTION 904
AND PART OF
BLOCK 2A, SECTION 904, RESTON
DEED BOOK 7883, PAGE 521 & DEED BOOK 7371, PAGE 438
AND A PORTION OF
EDMUND HALLEY DRIVE
DEED BOOK 25325, PAGE 2076
HUNTER MILL DISTRICT
FAIRFAX COUNTY, VIRGINIA

CURVE TABLE

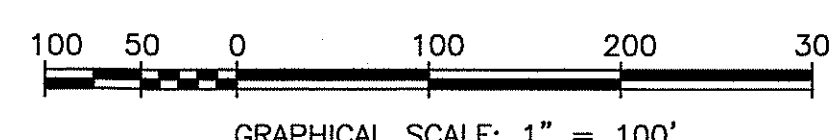
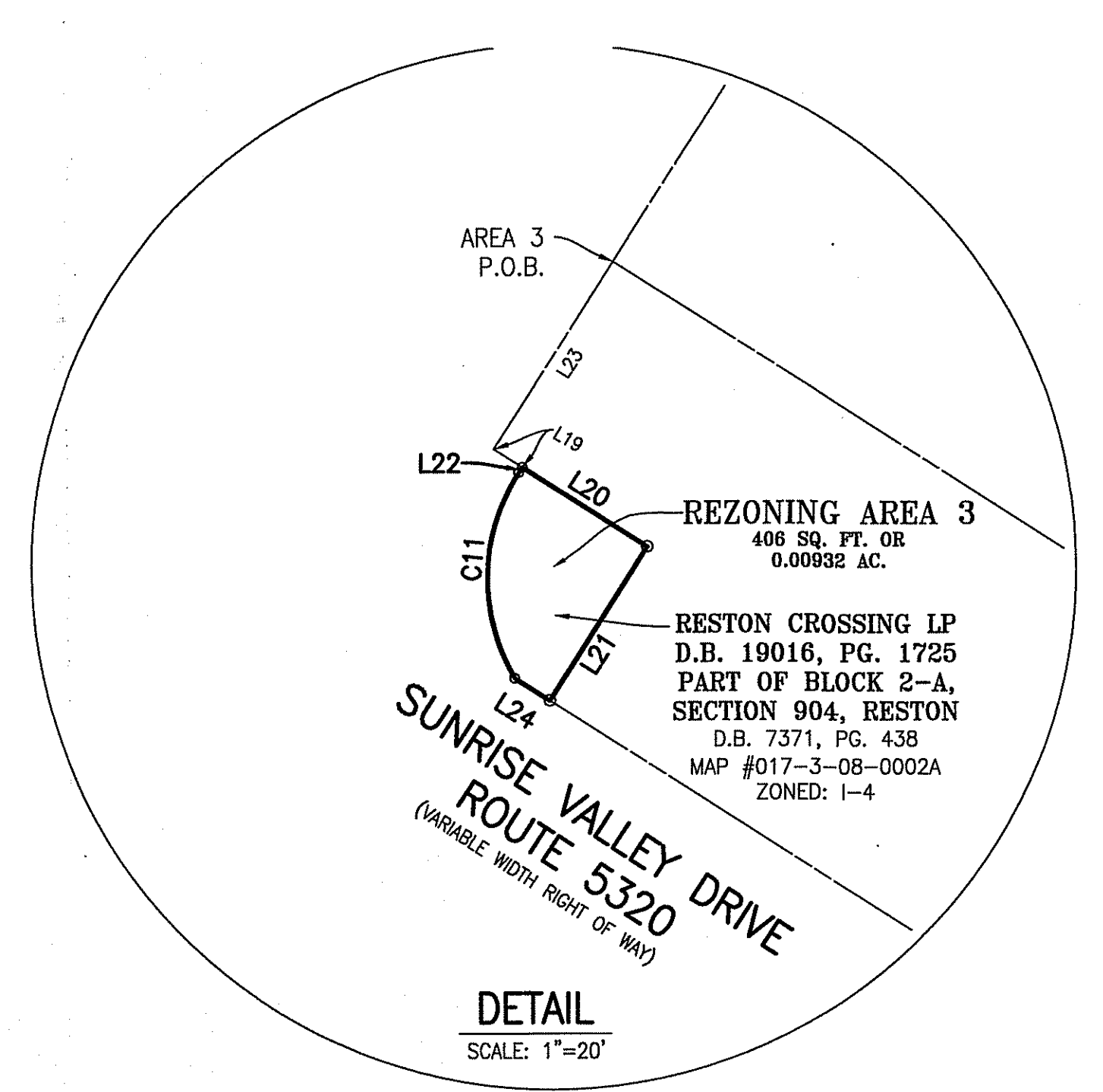
CURVE	ARC LENGTH	RADIUS	DELTA	TANGENT	CHORD	CHORD BEARING
C1	73.66'	16988.73'	0°14'54"	36.83'	73.66'	S82°25'12"E
C2	202.22'	778.51'	14°52'59"	101.68'	201.66'	S53°09'26"E
C3	269.15'	474.00'	32°32'04"	138.31'	265.55'	S61°58'58"E
C4	103.26'	1925.20'	3°04'23"	51.64'	103.25'	S13°17'12"W
C5	113.10'	80.53'	80°28'31"	68.14'	104.03'	N12°23'11"W
C6	42.48'	64.50'	37°43'59"	22.04'	41.71'	N30°12'29"W
C7	15.69'	34.50'	26°02'59"	7.96'	15.55'	N01°41'00"E
C8	55.46'	49.00'	64°50'42"	31.12'	52.54'	N40°32'53"E
C9	252.90'	435.00'	33°18'40"	130.14'	249.36'	S44°31'04"W
C10	227.27'	447.32'	29°06'35"	116.14'	224.83'	N42°45'04"E
C11	29.67'	27.00'	62°57'09"	16.53'	28.20'	N01°09'21"E
C12	19.45'	34.50'	32°17'44"	9.99'	19.19'	S23°22'15"E
C13	89.92'	80.50'	64°00'04"	50.30'	85.32'	S39°13'19"E

LINE TABLE

LINE	BEARING	DISTANCE
L1	S78°15'00"E	48.49'
L2	S33°15'10"E	66.24'
L3	N14°42'29"E	3.21'
L4	N12°24'40"E	33.65'
L5	N14°42'29"E	27.05'
L6	N42°47'25"E	29.50'
L7	N08°07'34"E	136.93'
L8	N72°58'16"E	57.42'
L9	N07°27'20"E	50.05'
L10	S60°16'54"E	18.00'
L11	S33°43'00"E	7.72'
L12	S27°51'44"W	68.05'
L13	N62°08'16"W	34.07'
L14	S27°51'44"W	67.12'
L15	S27°51'44"W	179.10'
L16	N29°09'46"W	9.40'
L17	N27°51'35"E	195.75'
L18	S61°43'56"E	21.60'
L19	S57°30'00"E	4.66'
L20	S57°30'00"E	20.33'

LINE TABLE

LINE	BEARING	DISTANCE
L21	S32°30'00"W	25.00'
L22	N32°30'00"E	0.92'
L23	S32°30'00"W	30.50'
L24	N57°30'00"W	5.68'



RECEIVED
Department of Planning & Zoning
APR 17 2019
Zoning Evaluation Division

SCALE: 1" = 100'
DATE: APRIL 04, 2019
PROJ. No.: 3224-0101
PHASE: 806A
COMPUTED BY: DRJ
File No: 3224-0101_C3D-ZN02
SHEET 1 OF 1